

# NEOLINE X-COP R700

DVR WITH DATA BASE  
OF POLICE RADARS AND CAMERAS





## NEOLINE X-COP R700

Neoline X-COP R700 - a new generation of DVR with GPS base of police radars and cameras. Touch-screen display, control via WiFi connection to the smartphone, perfect video quality, enhanced configuration, the ability to connect the radar unit distinguishes this DVR from all DVRs on the market.



## PERFECT QUALITY VIDEO

The Neoline X-COP R700 features the most powerful Ambarel-la processor and high-tech sensor from Sony. A viewing angle of 135 degrees and an optical system of 6 glass lenses create flawless shooting quality, including at night.

32GB 10 class memory card allows you to continuously record video in the FULL HD resolution for 5 hours.



## “X-COP” APP FOR ANDROID AND IOS

Installing the application "X-COP" on Android or iOS you can fully control the Hybrid Neoline X-COP R700:

- software update and GPS database via the Internet
- view Online video
- viewing saved video files
- saving video files to your smartphone
- Change video and detection settings
- parking lot determination



## NIGHT MODE

The device has a built-in "Night mode" recording, which is included based on the time settings in the menu, and allows you to display much more details on the video, especially on unlit sections of the road and the roadside.



## CPL FILTER

The anti-reflective filter is installed over the Neoline X-COP R700 lens. It serves to reduce the amount of sunlight on the video. Also, the highlights are often reflected on the windshield from the car's trim elements. In addition, the anti-glare filter significantly improves the contrast of the image.



## EASY TOUCH PLUS TOUCH PANEL

The DVR incorporates an improved version of the EASY TOUCH PLUS interface. Not only information about the upcoming police camera is displayed, but also a brief information about the next GPS point.



## INSTALATION IN THE CAR

Neoline X-COP R700 is attached using 3M adhesive tape with active charging. The installation of the mounting is combined with the power supply. One action is enough to start the device.





## GPS BASE OF 45 COUNTRIES

The device is equipped with GPS and GLONASS for the fastest search of satellites and the base of police radars and cameras of 45 countries (RF, EU, Uzbekistan, Kazakhstan, Armenia, Georgia, etc.). GPS base is constantly updated with new points. All updates are possible to download through the site of [neoline.com](http://neoline.com)



## INTELLECTUAL PROCESSING OF "AVERAGE SPEED CONTROL" CHAMBERS

A distinctive feature of the Neoline X-COP R700 is the intelligent processing of cameras "AVERAGE SPEED CONTROL", which occurs as follows:

- Voice and display warning of the distance on the display to the 1st camera
- After driving through the 1st camera, the distance to the 2nd camera will be displayed
- Information on the display of the current average speed will alternate with the distance to the 2nd camera of "AVERAGE SPEED CONTROL"
- If the current average speed exceeds the allowed speed, an audible warning will occur
- When the second camera passes, a voice notification about the end of video monitoring will occur
- When you leave the road section between two X-RX cameras, the R700 will discard the "AVERAGE SPEED CONTROL"
- When the car stops between two cameras, the average speed will continue to be displayed on the display



## TRAFFIC CONTROL CAMERAS WARNING

In addition to notifications about police radars, Neoline X-COP R700 notifies all traffic control cameras and warns about such types of control as:

- Control of the public transportation lane
- Warning about cameras shooting in the back of the car
- Roadside controls
- Control of traffic lights and intersection
- Pedestrian crossing control



## CONTRAST IPS DISPLAY

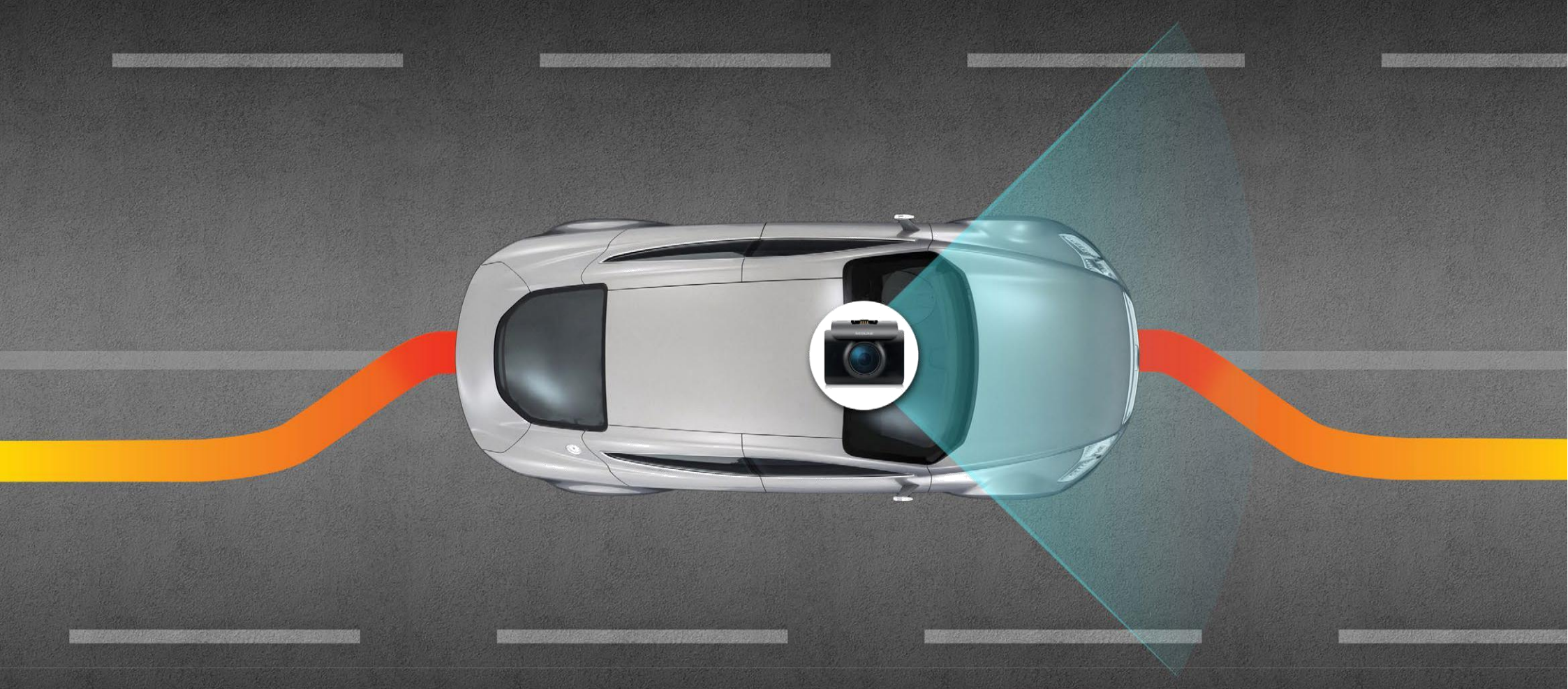
The Neoline X-COP R700 has a 2.8-inch display with an IPS matrix. The information on the display is clearly visible in any weather and practically at any viewing angle:

- a schematic image of the type of police radar
- permitted speed on the road section
- current vehicle speed
- average vehicle speed
- distance to the GPS point
- current time
- hazardous areas



## VOICE ALERT ABOUT 45 TYPES OF POLICE RADARS

Neoline X-COP R700 will notify you about the type of police camera, the allowed speed on the road section, gives information about the distance to the radar and the average speed (in case of detecting Average speed control). The database includes 45 different types of radars, such as Strelka, Robot, Cordon, Chris, Krechet, Avtodorina, etc. Each new police radar is quickly added to the base and is available in new firmware.



## LANE DEPARTURE WARNING SYSTEM (LDWS)

Neoline X-COP R700 constantly monitors the position of the car relative to road marking. If the car is inadvertently displaced from the current lane, an audible alarm is triggered and information is displayed. In the settings, you can set the speed limit at which this system will not work, so as not to overload the driver with unnecessary sounds.



## MANUAL INPUT OF GPS POINTS

Flexibility of settings allows you to turn on and off individual GPS points, such as: DPS posts, Average speed control camera systems, Strelka stationary radars, radar complexes, and others.



## DANGEROUS ZONE

You can independently add to your GPS base the Hazardous zone, which refers to the locations of police radars (if there are none in the current base), lively crossroads, lying cops, etc. The next time the DVR moves in this place, the DVR will notify you in advance of a warning signal.

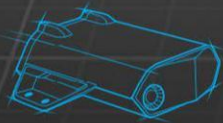
The Radius of the Hazardous Zone can be set in the Device Menu.

The zones are installed in the device memory and will not be deleted when reprogramming or installing a new GPS base.





**RADAR READY**



## RADAR READY

If desired, the DVR Neoline X-COP R700 can be connected to the radar unit under the hood of your car, the Neoline X-COP Radar (not supplied). Connecting the DVR to the radar unit will detect all police radars and mobile ambushes.



## MAXIMUM SPEED

This function does not exceed the speed limit you set. Set the speed at which an acoustic alert will be issued for exceeding the speed. "Maximum speed" is not tied to the GPS base and functions separately from the detection of police radars.



## GPS INSPECTION DATA

The range of alerts to police radars in the GPS base can be set based on your preferences:

- 1) By the value in the base - each camera in the GPS base is assigned its manufacturer's values in meters, for which the warning will start.
- 2) By the set value in the settings - each camera in the GPS database is assigned a value to choose from: 300 m - 900 m.
- 3) At the current speed of the car - the higher the speed, the more distance you learn about the installed police radar.

A photograph of a server room aisle. The room is dimly lit with a strong blue glow emanating from the server racks and floor. The racks are filled with equipment, and the floor has a pattern of circular ventilation holes. In the center of the aisle, there is a large white rounded rectangle containing the word "DEMO" in bold, blue, sans-serif capital letters.

**DEMO**

## DEMO MODE

For user's convenience, DEMO mode will show the operation of the DVR (audio and voice alert, display on the display).

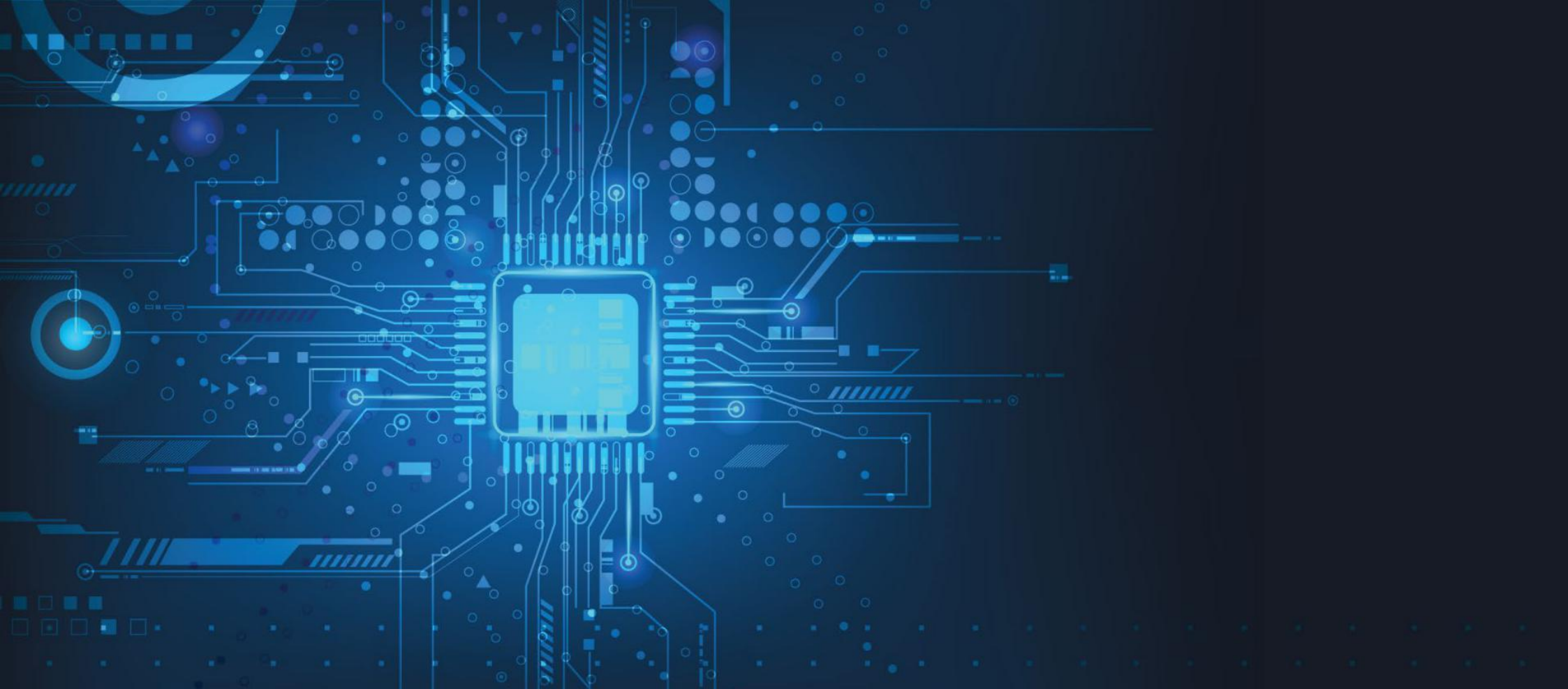
The Neoline X-COP R700 will exit the DEMO mode after completing the entire alert and display loop.



## RELIABILITY OF EACH DETAIL

The Neoline X-COP R700 is the development of leading Korean automotive electronics experts to enhance driver safety.

The Neoline X-COP R700 is the perfect combination of Korean quality and reliability.



## UPGRADES OF GPS DATA BASE THROUGH WIFI

When new firmware and GPS bases are released, you need to update them with the X-COP application or Micro SD memory card. The current firmware and GPS base will not allow missing recently installed police radars and cameras.

Follow the official firmware updates at [www.neoline.com](http://www.neoline.com)



## EXTENDED EQUIPMENT

Neoline X-COP R700 has the latest technology and software, however, everything else has an extended package:

- Video recorder Neoline X-COP R700
- Micro SD 32GB 10 Class memory card and memory card adapter
- Mounting with active charging on 3M scotch Smart Click Plus
- Anti-glare filter (CPL) 37 mm
- Storage case
- Power cable to cigarette lighter
- Various fastening and connecting elements for cables

## TECHNICAL DATA NEOLINE X-COP R700

- Ambarella processor
  - SONY matrix
  - Viewing angle 135°, 6 glass lenses
  - Full HD resolution 1920x1080 (30 fps)
  - Realistic and clear video with maximum of details by day and night
  - Intelligent mode for suppressing glare and sunlight
  - GPS and GLONASS modules and data base of police radars in 45 countries
  - 2,8 touch screen IPS
  - Built-in WIFI module
  - Intelligent processing of Average speed control systems
  - Quick menu of basic settings and functions on the main screen
  - Intuitive operation via touch screen
  - Managing the DVR using your smartphone
  - View/lock/rewind files on your smartphone
  - Interface Neoline Easy Touch Plus
  - Parking mode
  - Add/remove hazardous areas
  - Setting the radii of Hazardous areas
  - Enable/disable individual types of GPS points
  - Voice notifications of 45 types of stationary radars
  - Allowable speeding
  - Maximum speed
  - Auto muting
  - Screen saver with a speedometer display
  - G-sensor, motion sensor
  - Card slot: Micro SD up to 128 GB, class 10
  - Cyclic recording
  - Demo mode
  - Updating the software and GPS database using smartphone or Micro SD card
  - Input voltage 12 – 24 V
  - Rotate device in cabin, 360°
  - Battery: 220 mAh
  - Operating temperature from -10° to +60°
- 



## EQUIPMENT:

- NEOLINE X-COP R700
- Micro SD card 32GB class 10
- Fixing with active charging on 3M scotch Smart Click Plus
- Power cord to car outlet (DC 12-24V)
- CPL filter 37 mm
- Memory card adapter
- Fastening elements for power cable (8 pcs)
- Storage case for the device
- User manual
- Warranty card





**NEOLINE**



NEOLINE  
**X-COP R700**

[www.neoline.com](http://www.neoline.com) Tech. support : [support@neoline.com](mailto:support@neoline.com)