

NEOLINE G-TECH X76

DUAL CHANNEL DASH CAMERA



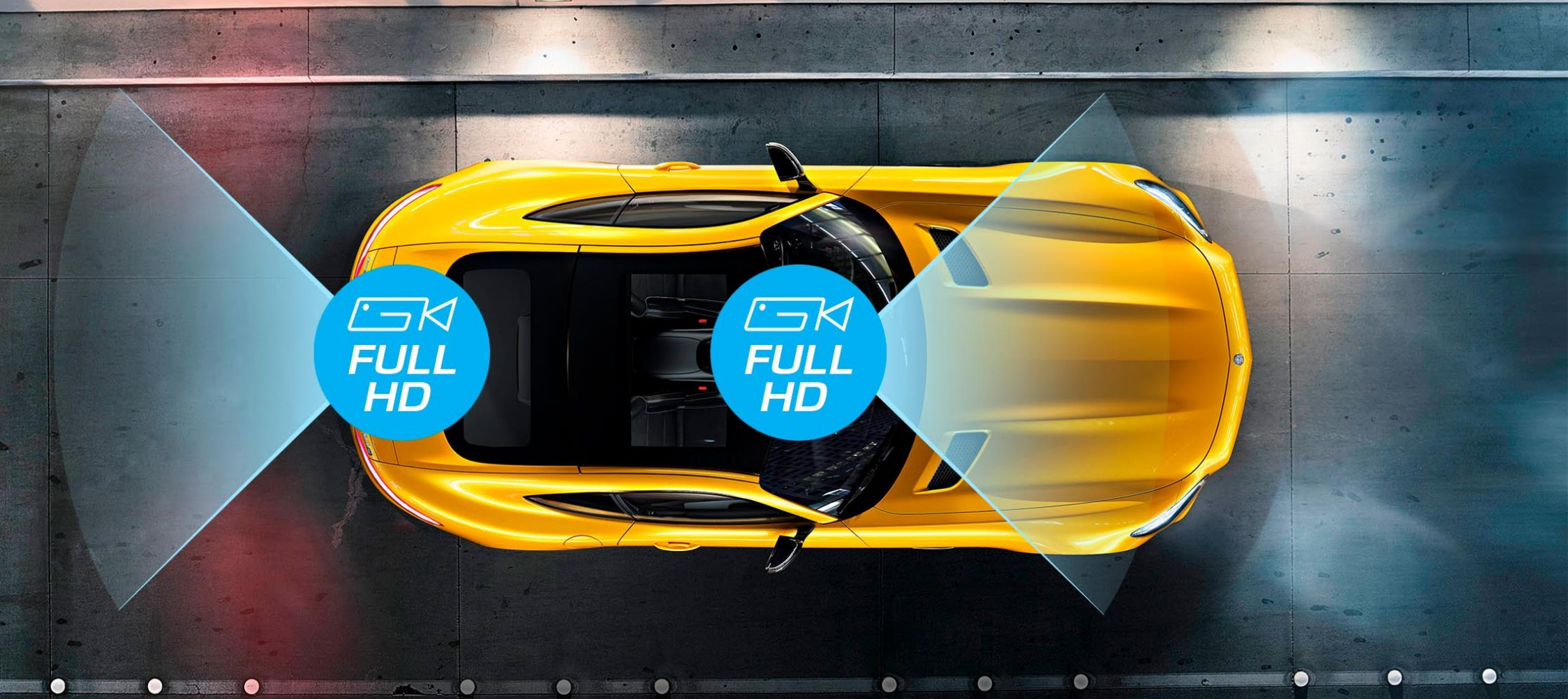
NEOLINE



ULTIMATE COMFORT



Dual channel | Magnetic holder | Advanced parking mode | Night recording mode



TWO CHANNEL

The NEOLINE G-Tech X76 dash camera is equipped with an additional Full HD camera that records all the nuances of the road situation behind the car. The camera can be installed either in the car or on the rear bumper. This option is perfect for novice or heavy truck drivers.



ERGONOMICS AND INTERFACE

NEOLINE G-Tech X76 is equipped with easy-to-use buttons, whose location provides an intuitive “blind” setup. A 2-inch IPS-based display allows the user to make settings and view video without distorting the color of the image from different angles.



MAGNETIC HOLDER

NEOLINE G-TECH X76 equipped with magnetic mount, which allows you easily to remove and install the DVR. A distinctive feature of this two-channel model is not only active power, but communication with the rear camera is also carried out through the mount!



HOT-KEY

The HOT-KEY button is designed to block recording, and its long-press activates additional functionality. For example, the activation of Parking Mode.

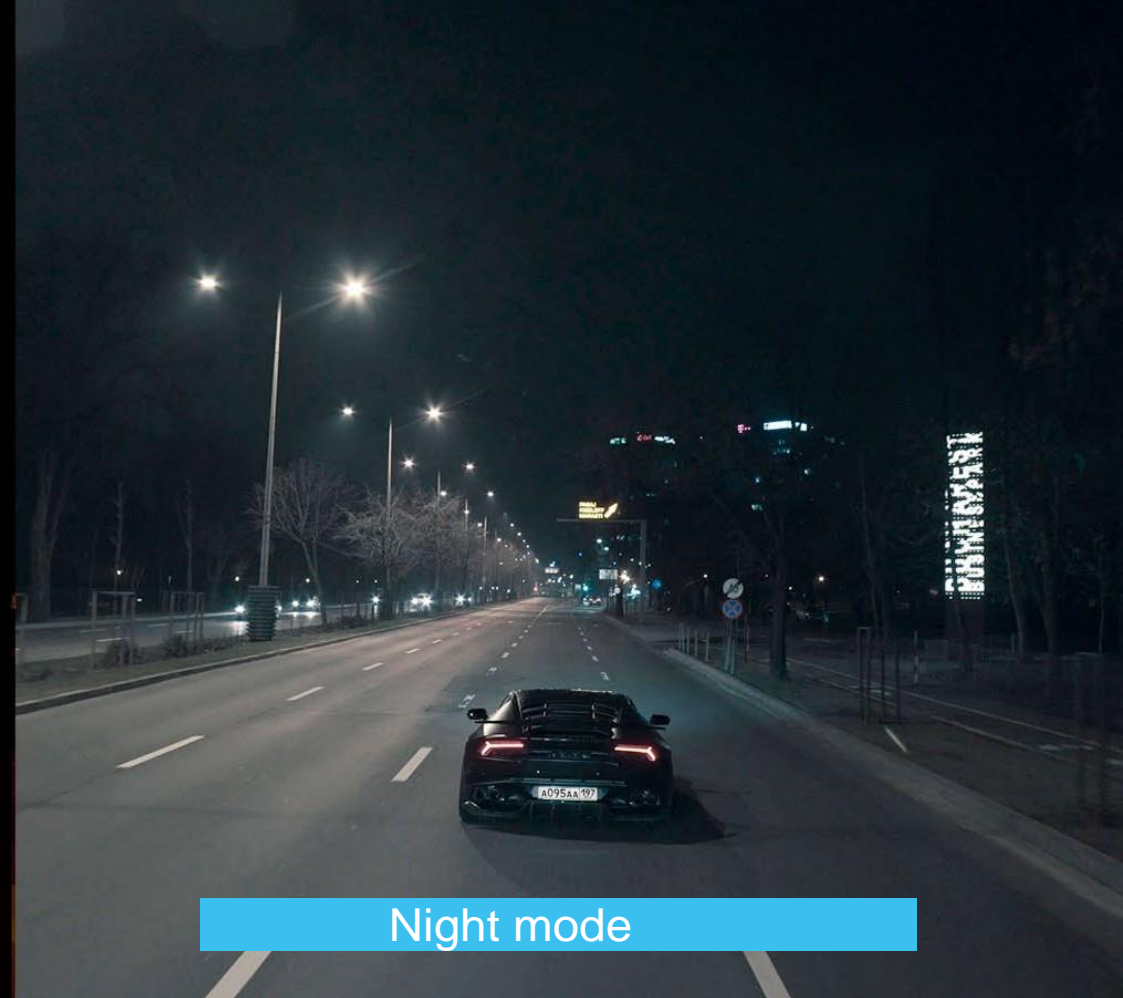


f/1.8



HIGH QUALITY RECORDING

High quality detailed video in the NEOLINE G-Tech X76 is provided by Novatek's powerful processor, SONY sensor and a 1: 1.8 aperture lens. This technical base allows the NEOLINE G-Tech X76 video recorder to record video with a resolution of Full HD 1920 * 1080 at 30 frames per second, obtaining a high-quality, detailed picture not only during the day, but also at night.



NIGHT RECORDING MODE

NEOLINE G-Tech X76 is equipped not only with excellent optics and a matrix, but also with a special algorithm that allows you to increase detail in low light conditions.



ANTI-GLARE CPL-FILTER

A 37mm diameter anti-glare CPL filter is mounted on top of the NEOLINE G-Tech X76 lens. It serves to reduce the amount of sun glare and reflections from the windshield in the video. Also, the CPL filter significantly improves image contrast.



IMPROVED VIDEO CONTRAST

NEOLINE G-Tech X76 is equipped with an extended dynamic range WDR function that provides a balanced image in terms of color and light in difficult conditions: with backlighting and intense changing lighting. This is especially important when entering and leaving the tunnel, in bright direct sunlight, etc. Thanks to the WDR function in the NEOLINE G-Tech X76 DVR, video quality remains at a high level even in the most difficult conditions.



WIDE VIEW ANGLE

Thanks to its wide viewing angle of 140 °, the NEOLINE G-Tech X76 covers all 5 lanes of the roadway, without distorting the picture. The DVR will really record everything that happens on the road.



ADVANCED PARKING MODE

NEOLINE G-Tech X76 parking mode has a large set of settings, voice prompts and notifications to ensure the maximum evidence base in the event of an accident or other illegal actions in the parking lot. It is especially worth to point the possibility of activating interval shooting, thanks to which you can view ~ 2 to 15 minutes of real time in a 30 second movie, which allows you to use the free space on the memory card more efficiently.



PROTECTION FROM DIFFICULT WEATHER CONDITIONS

NEOLINE G-Tech X76 is equipped with a capacitor, not a standard battery. The capacitor is much more resistant to high temperatures and has a long service life. Thanks to the capacitor, many typical problems of DVRs have been resolved: overheating, battery explosion hazard, loss of the “latest” files.



STOPPED RECORDING NOTIFICATION SYSTEM

To prevent cases of lack of recording, the NEOLINE G-Tech X76 provides a notification function for stopped recording. The DVR emits a special sound signal.

TECHNICAL SPECIFICATION NEOLINE G-TECH X76



- Resolution: front camera: Full HD 1920*1080 (30 fps)
rear camera: Full HD 1920*1080 (30 fps)
- View angle: front camera: 140°
rear camera: 140°
- Display: IPS, 2"
- Built-in capacitor*
- Rear camera cable length: 10m
- Rear camera protection class: IP67
- Magnetic holder with active charging and a rear camera connector
- Built-in microphone/speaker
- G-sensor
- Parking mode
- Night recording mode
- Motion sensor
- Loop recording
- Cyclic recording
- Auto power on
- Date/time/plate no. stamps
- MicroSD 8GB – 256GB (Class 10)
- Storage temperature -20°C to +70°C
- Operating temperature -10°C to +60°C
- Input voltage: DC 5V, 1.5A
- Charger input voltage: DC 12-24V
- Size: 74 x 42 x 35 mm
- Weight: 93 g

Equipment:

- Neoline G-Tech X76 Dual
- Magnetic holder with 3M tape
- Anti-glare CPL-filter
- Rear Full HD camera
- Rear camera cable
- Car charger with USB connector
- User manual
- Warranty card



NEOLINE
G-TECH X76

Official site: www.neoline.com. Technical support: support@neoline.com