

NEOLINE G-TECH X74



NEOLINE



**GPS RADAR
BASE**

Magnetic mount | anti-Glare CPL filter | Advanced Parking Mode | Night Mode



ERGONOMICS AND INTERFACE

The sleek NEOLINE G-Tech X74 case is equipped with easy-to-operate buttons, the location of which provides intuitive “blind” adjustment. 2-inch display, made by IPS technology, allows the user to make settings and view video without distorting the color of the image from different angles.



MAGNETIC MOUNT

The NEOLINE G-Tech X74 magnetic mount with active charging makes it easy to remove and install the DVR without the need to constantly connect wires.



THE HOT-KEY BUTTON

The HOT-KEY button is designed to block the recording, and its long hold activates additional functionality. For example, activates Parking Mode.

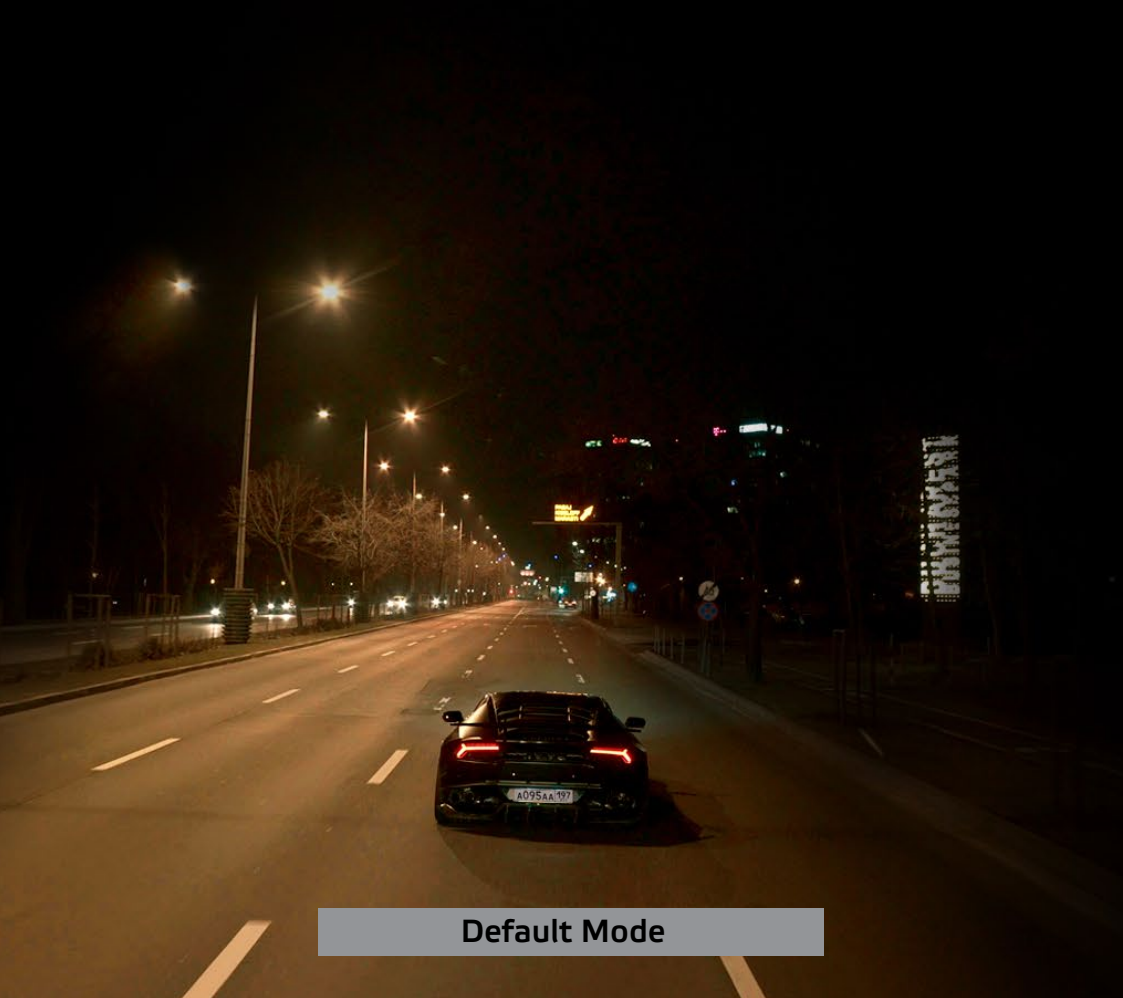


f/1.8



HIGH QUALITY SHOOTING

High quality and detail video in NEOLINE G-Tech X74 is provided by a powerful Novatek processor, SONY sensor and lens with an aperture of 1: 1.8. This technical base allows the Neoline G-Tech X74 DVR to shoot video with a resolution of full HD 1920*1080 at 30 frames per second, getting a high-quality, detailed picture not only during the day but also at night.



NIGHT MODE

NEOLINE G-Tech X74 is equipped not only with excellent optics and matrix, but also a special algorithm that allows you to increase detail in low light conditions.



ANTI-GLARE CPL FILTER

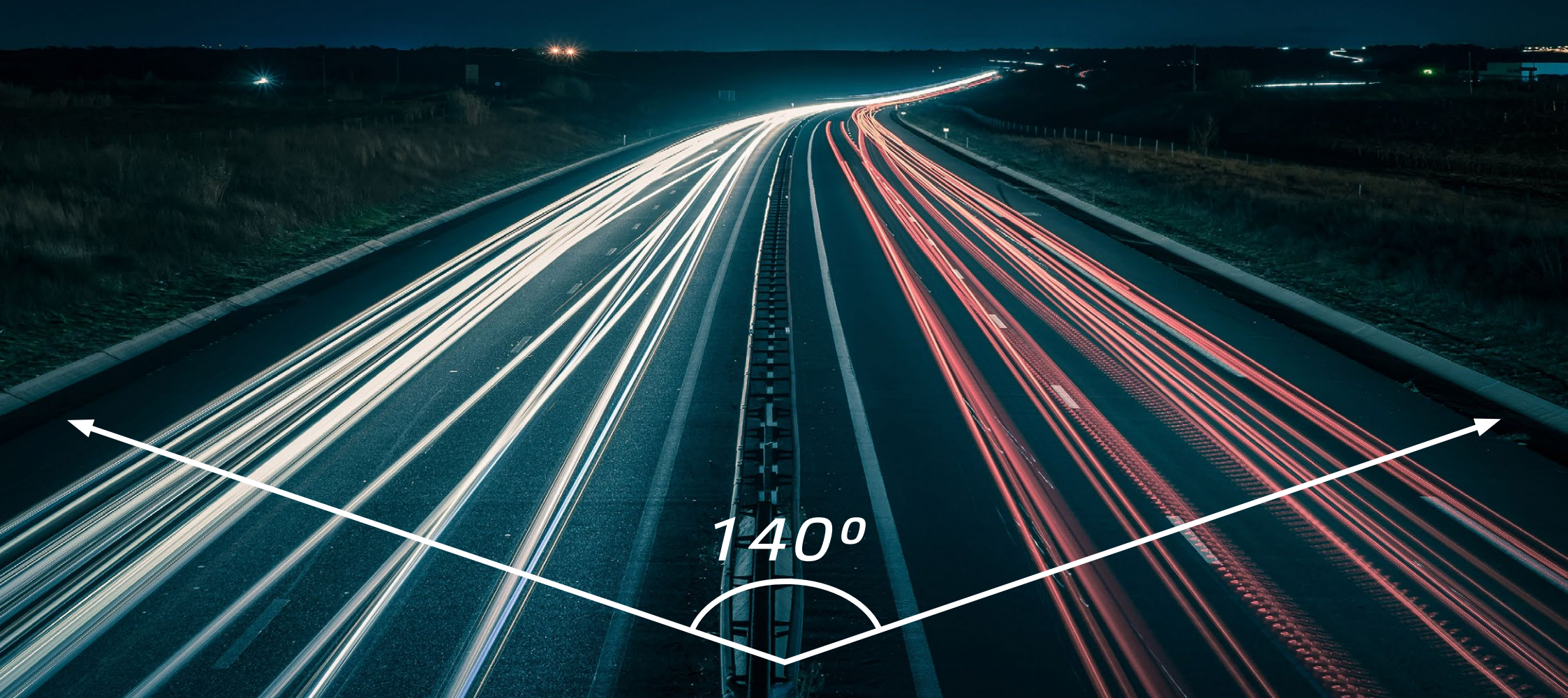
The 37mm diameter anti-Glare CPL filter is mounted on top of the NEOLINE G-Tech X74 lens. It serves to reduce the amount of sunlight and reflections of interior objects from the windshield on the video. The CPL filter also significantly improves the contrast of the image.



WDR
Wide Dynamic
Range

IMPROVED CONTRAST VIDEO

NEOLINE G-Tech X74 feature extended dynamic range WDR, providing a balanced image of the color and light in difficult conditions: when backlit, intense and changing light. This is especially important when entering and exiting the tunnel in bright direct sunlight, etc. Thanks to the WDR function in DVR NEOLINE G-Tech X74 video quality remains at a high level even in the most difficult conditions.



WIDE ANGLE OF THE REVIEW

Due to the wide viewing angle of 140° , the NEOLINE G-Tech X74 covers all 5 lanes of the roadway, while not distorting the picture. The DVR will record really everything that happens on the road.



EXTENDED PARKING MODE

Parking mode NEOLINE G-Tech X74 has a large set of settings, voice prompts and notifications to ensure maximum evidence base in the event of an accident or other illegal actions in the Parking lot. Especially worth noting is the ability to activate the interval shooting, thanks to which within the 30 second video can be viewed from ~2 to 15 minutes of real time, which allows you to use the free space on the memory card more efficiently.



PROTECTION FROM DIFFICULT WEATHER CONDITIONS

The NEOLINE G-Tech X74 is equipped with a capacitor, not a standard battery. The capacitor is much more resistant to high temperatures and has a long service life. Due to the capacitor solved many common problems DVRs: overheating, explosion of the battery, the loss of the “recent” files.



Russia

Europe

USA

Turkey

Middle East

Israel



WORLDWIDE GPS DATABASE

Neoline devices have built-in radar and camera database which includes data of more than one hundred thousand radars around the world (Europe, USA, Israel, Middle East, Turkey, Australia, etc.). The database is updated regularly on neoline.com.



INTELLIGENT PROCESSING OF CAMERAS OF CALCULATION OF AVERAGE SPEED

A distinctive feature of the NEOLINE G-Tech X74 is the intelligent handling of cameras that calculate average speed. The algorithm incorporated in the NEOLINE G-Tech X74 allows you to reset the alert when you exit the station and even the turn to be monitored, alert you to speeding, correctly process other GPS points on the site where the average speed is calculated.



THE SYSTEM ALERTS STOPPED RECORDING

The NEOLINE G-Tech X74 provides a stop recording notification function to prevent cases of missing recording. The video recorder takes the special audio signal.

SPECIFICATIONS NEOLINE G-TECH X74



- Camera resolution: Max Full HD (1920x1080 / 30 fps) with a high bitrate
Eco Full HD (1920x1080 / 30 fps) with a standard bitrate
HD 60fps (1280x720 / 60 fps)
HD (1280x720 / 30 fps)
VGA (640x480 / 30 fps)
- Sony Sensor
- Viewing angle: 140°
- Screen size: 2 inch, IPS
- Built-in super capacitor
- Built-in GPS
- Anti-glare CPL filter
- Video recording format: MP4
- Built-in microphone / speaker
- WDR function
- G-sensor
- Parking mode
- Night mode
- Cyclic recording: 1/2/3/5 min
- Continuous recording
- Auto power off
- Stamp date/time
- Stamp of state number
- Micro SD 8Gb-128GB (Class 10)
- Input voltage: DC 5V, 1.5
- AInput voltage memory: DC 12-24V
- Dimensions: 75 x 43 x 22 mm
- Weight: 80 g

EQUIPMENT:

- NEOLINE G-Tech X74 DVR
- Magnetic mount on the duct tape Anti-glare CPL filter
- Car charger (2 USB connectors)
- User manual
- Warranty card



NEOLINE
G-TECH X74

Official website: www.neoline.com Technical support: support@neoline.com