

NEOLINE
G-TECH X72



NEOLINE



Magnetic holder | Antiglare CPL filter | Extended parking mode | Night mode



ERGONOMICS & INTERFACE

The compact case of NEOLINE G-Tech X72 is fitted with convenient, easy-to-operate buttons, its allocation allows to change settings of the device blindly. With a 2-inch IPS display user can make settings and view the videos with true-color imaging from any angle.



MAGNETIC HOLDER

NEOLINE G-Tech X72's magnetic holder with active charging makes it easy to mount the dash camera and take it away, no wires involved.



HOT-KEY

HOT KEY button serves to disable recording when necessary. Hold it down to access extra options like Parking Mode.



f/1.8

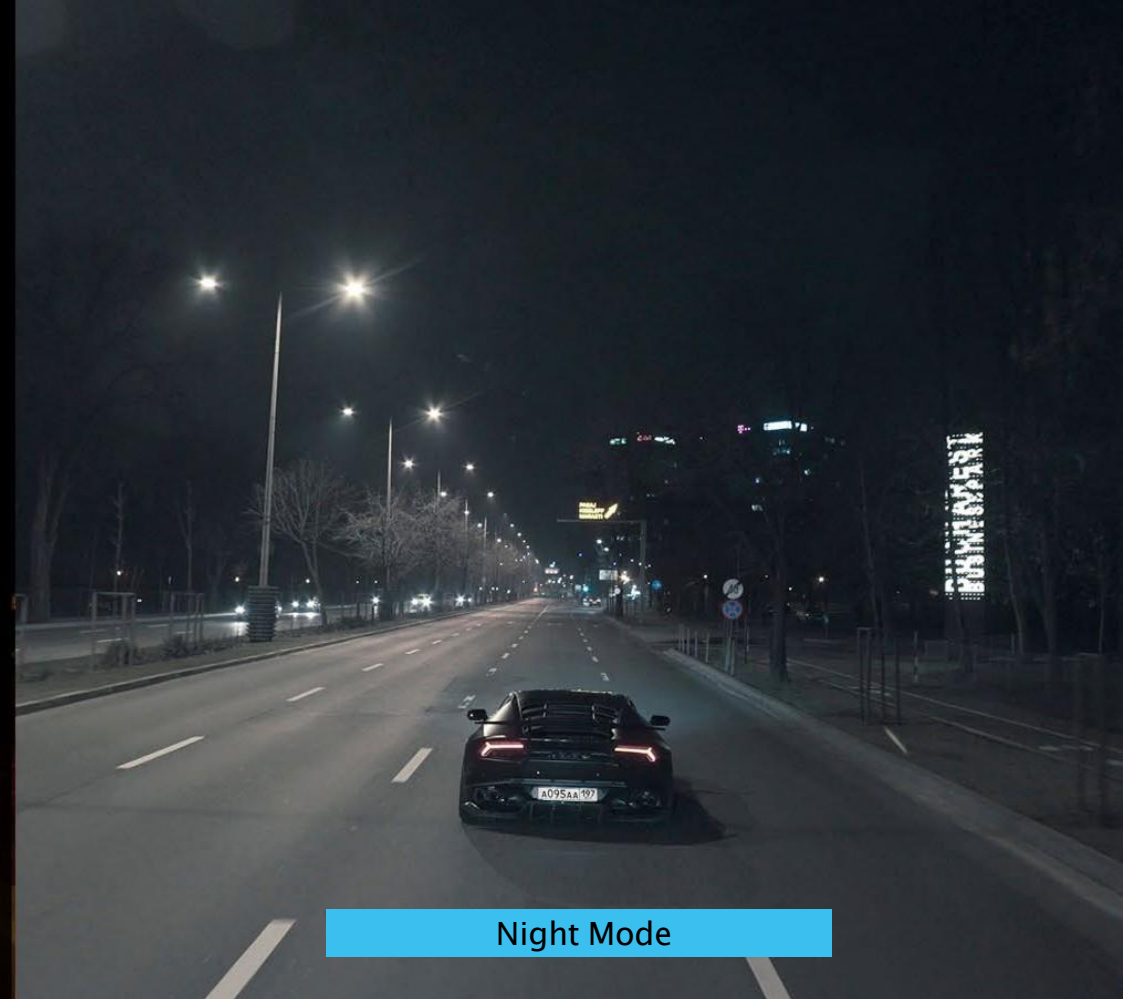


HIGH QUALITY VIDEO

Due to a powerful Novatek CPU, SONY sensor and lens with 1:1.8 aperture NEOLINE G-Tech X72 provides high quality and detailed video. Such hardware allows NEOLINE G-Tech X72 to shoot Full HD 1920*1080 resolution footage at 30 fps, which provides detailed, high-quality picture both in daylight and at night.



Default Mode



Night Mode

NIGHT MODE

NEOLINE G-Tech X72 features first-class optics and matrix, as well as special algorithm which guarantees highly detailed picture in the hard lighting conditions.



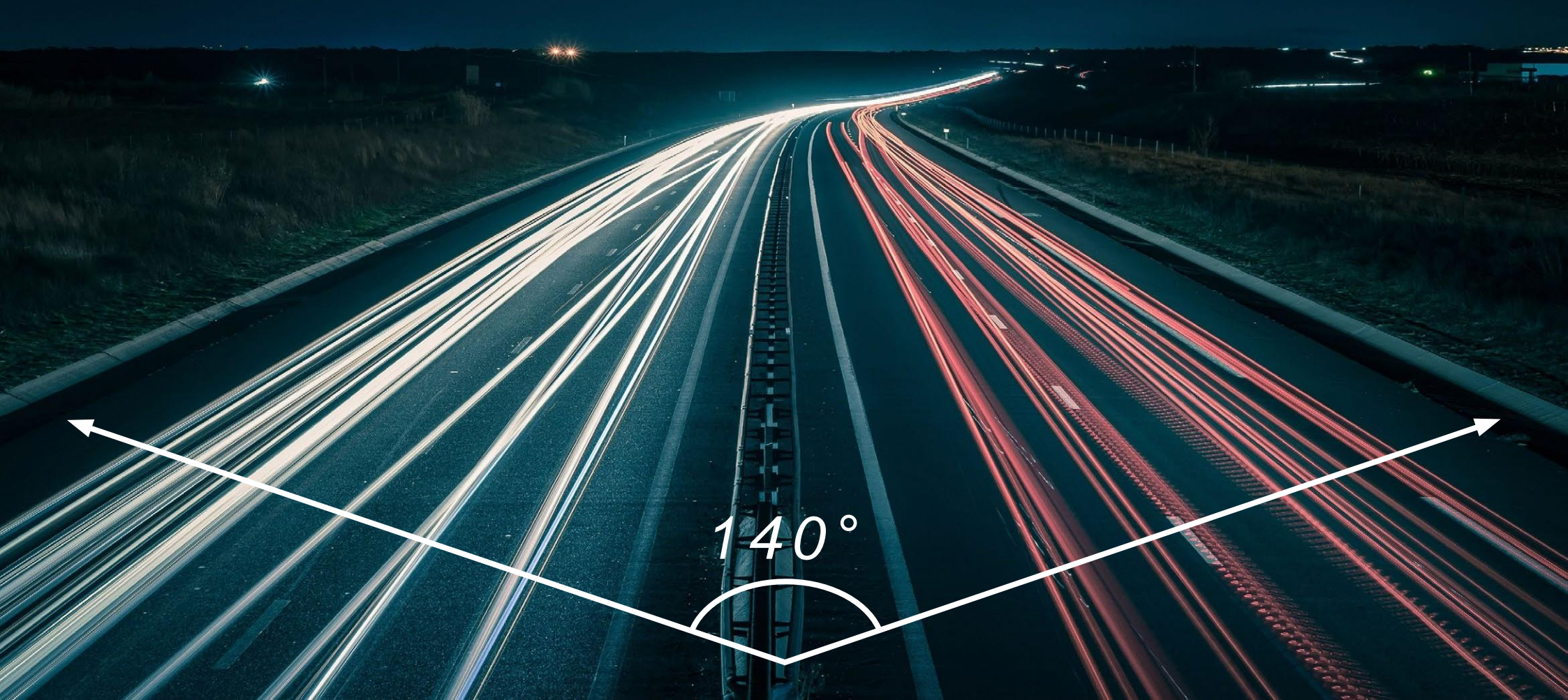
ANTI GLARE CPL FILTER

A 37mm antiglare CPL filter is placed over the NEOLINE G-Tech X72 lens to prevent sunlight flecks and interior objects reflections on the windshield. The CPL filter also significantly improves image contrast.



HIGH CONTRAST VIDEO

NEOLINE G-Tech X72 has WDR function that keeps the picture well balanced in terms of wide range of lighting conditions, such as back lighting or quickly changing light. This is particularly important during the entrance / exit from a tunnel or in case of bright direct sunlight. Due to WDR function, NEOLINE G-Tech X72 makes high-quality videos even in the most challenging conditions.



WIDE VIEWING ANGLE

Due to 140° wide view angle NEOLINE G-Tech X72 covers five traffic lanes without distorting the picture. It will surely record everything that happens on the road.



EXTENDED PARKING MODE

The parking mode in NEOLINE G-Tech X72 offers a wide selection of settings, voice prompting and alerts to provide you with a conclusive evidence base in case of a road accident or illegal activities at the parking area.



PROTECTION FROM DIFFICULT WEATHER CONDITIONS

NEOLINE G-Tech X72 comes with a capacitor instead of a battery. Capacitors are more heat-resistant and are generally more durable than batteries. It helps to solve many typical problems that other dashcams have, including overheating, battery explosion hazard, losing the latest files.



STOP RECORD SIGNAL

To prevent any situations in which video records are absent, NEOLINE G-Tech X72 gives a special sound signal when the recording stops.



Technical specifications:

- Camera resolution: Full HDMax (1920x1080 / 30 fps) with enhanced bitrate
Full HD Eco (1920x1080 / 30 fps) with standard bitrate HD60fps (1280x720 / 60 fps)
 - HD30fps (1280x720 / 30 fps)
 - VGA(640x480 / 30 fps)
- Sony sensor
- 140° viewing angle
- Screen size: 2 in., IPS
- Integrated super capacitor*
- Antiglare CPL filter
- Recording format: MP4
- Integrated mic/speaker
- WDR feature
- G-sensor
- Parking mode
- Night mode
- Loop recording: 1/2/3/5 mins
- Continuous recording
- Auto power-on
- Date/time stamp
- Number plate stamp
- 8Gb-128Gb MicroSD (Class 10)
- Storage temperature: -20°C (-4°F) to +70°C (158°F)
- Operating temperature: -10°C (14°F) to +60°C (140°F)
- Input voltage: DC5V, 1.5 A
- Memory unit input voltage: DC12-24 V
- Dimensions: 74x42x34.5 mm
- Weight: 87 g

Package contents:

- NEOLINE G-Tech X72 dashboard camera
- Magnetic holder with adhesive tape
- Antiglare CPL filter
- Car charger with 2 USB ports
- User manual
- Warranty card



NEOLINE
G-TECH X72

Official website: www.neoline.com Technical support: support@neoline.com