

Dear Business Partners and Friends,

We proudly announce the official release of the **P-VW20S20-01** DNA High Performance Automotive Air Filter for the models of the following brands found in the attached application list:



- ✓ VOLKSWAGEN
- ✓ AUDI
- ✓ SEAT
- ✓ SKODA


- This DNA New filter features DNA®'s advanced FCd¹ (Full Contour design).
- Installation of this new DNA Air filter is very easy; simply follow the installation instructions included in the workshop manual
- The filtering efficiency² is extremely high at **98-99%** filtering efficiency (ISO 5011), with 4 layers of DNA® Cotton.
- The flow of this new DNA filter is **+26.85%** more than the stock filter!
- DNA air filter flow: **232.50 CFM**
(Cubic feet per minute) @1,5"H₂O corrected @ 25degrees Celsius
-VOLKSWAGEN stock filter's flow: **183.30 CFM**
(Cubic feet per minute) @1,5"H₂O corrected @ 25degrees Celsius
- This DNA® filter is designed as a High Flow Air filter for: **'Road & Track use'**.

**VOLKSWAGEN/AUDI/
SKODA/SEAT**

ATTACHED APPLICATION LIST

DNA PART N°:
P-VW20S20-01





STOCK FILTER'S AIR FLOW
183.30 CFM ✓

DNA® FILTER'S AIR FLOW
232.50 CFM ✓

DNA® INCREASED AIR FLOW
+26.85% ✓

DNA® FILTERING EFFICIENCY
98-99% ✓

1  FCd (Full Contour design) is the innovative design by DNA®, that allows the filtering material to follow precisely the contour of the air box and uses the complete air box surface as "active filtering area" eliminating "dead spots" that cause turbulence, increasing air flow and filtering efficiency.

2  Filtering efficiency is the amount of "dirt" the filter can maintain (stop) and protect the engine efficiently. For example the DNA® Filter for every 100 grams of dirt that it will receive, it will hold **98-99 grams**, this applies even to fine dirt as small as 5 microns.



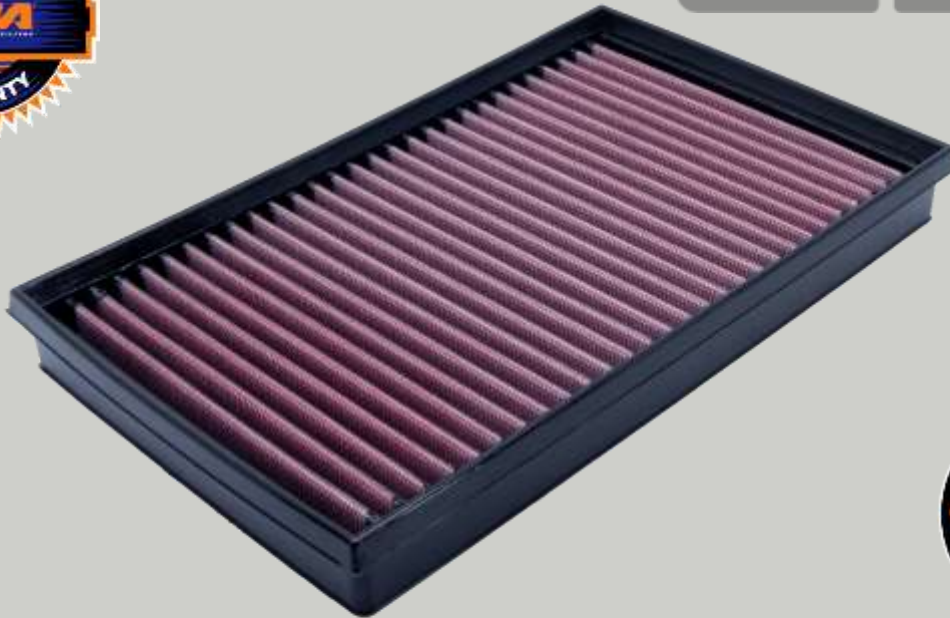
MSRP 60.00€

For Distributor and dealer pricing please contact our sales department.
High resolution photos and flow graphs are available upon request.

VOLKSWAGEN/AUDI/
SKODA/SEAT

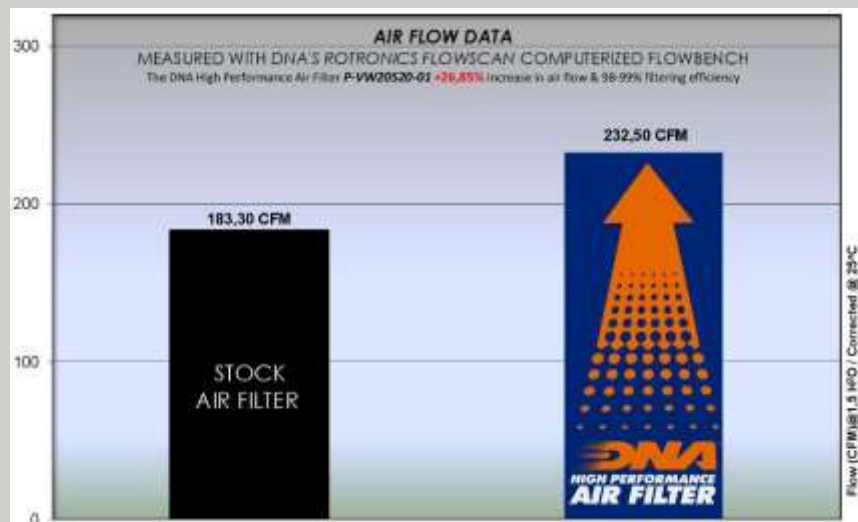
ATTACHED APPLICATION LIST

P-VW20S20-01



DNA®
INCREASED
AIR FLOW

✓ +26.85%



Head Office
61 Vithinias str., 18 450 Nikea, Athens, Greece
Tel.: (+30) 210 49 26 278, Fax: (+30) 210 49 26 279

Factory
Konstantinoupoleos & D.Theotokopoulou str.,
Papakosta Ind. Est., 19 600 Mandra Attika, Greece
Tel.: (+30) 210 55 59 983, Fax: (+30) 210 55 59 984

GPS Coordinates
38°3'31.97"N, 23°31'15.15"E

www.dnafilts.com



DNA®
HIGH PERFORMANCE FILTERS
advanced air filter engineering